



2025 Upper Deschutes Water Outlook

Jeremy Giffin

**Deschutes River Basin Watermaster
Oregon Water Resources Department**

Crescent Creek March 19 2024

The Watermaster's Role



- Deschutes Basin watermaster (OWRD-state agency) has regulated and distributed the flows of the Deschutes for over 100 years.
- Regulate Groundwater withdrawals of the Deschutes Basin
- Monitor daily river flows and reservoir contents to rapidly respond to agricultural and environmental needs (HCP) and instream water rights
- Guide hydrographic-related monitoring to accurately and quantitatively for informed decision making through our network of 60 stream gages
- Coordinate reservoir releases for irrigation demand with irrigation districts
- Provide monthly storage report to irrigation districts to track all water usage
- Curtail junior users in times of shortage

Crescent Lake March 19 2025

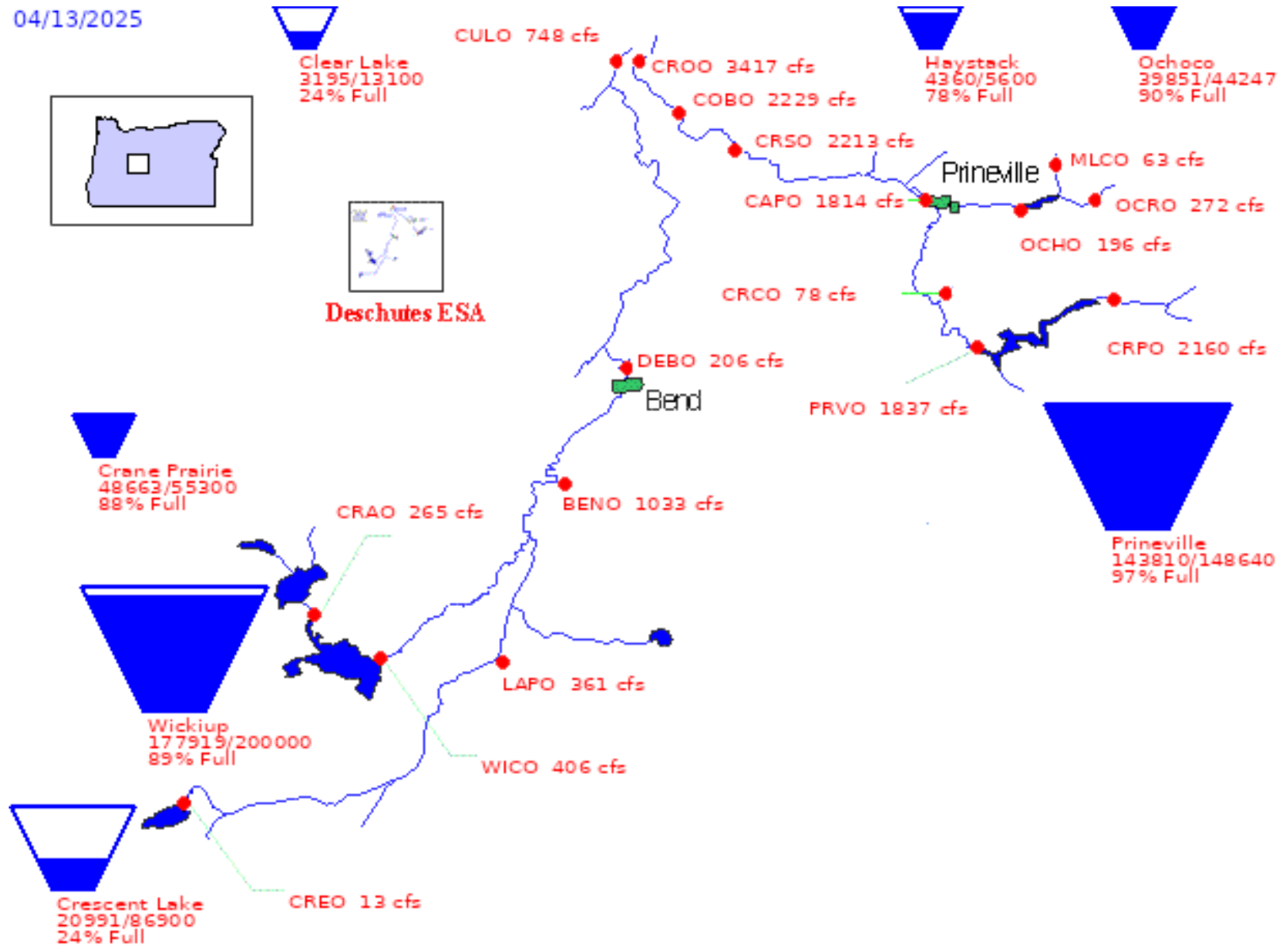


Overview of the “teacups” as of April 14 2025:

Wickiup 89% Full

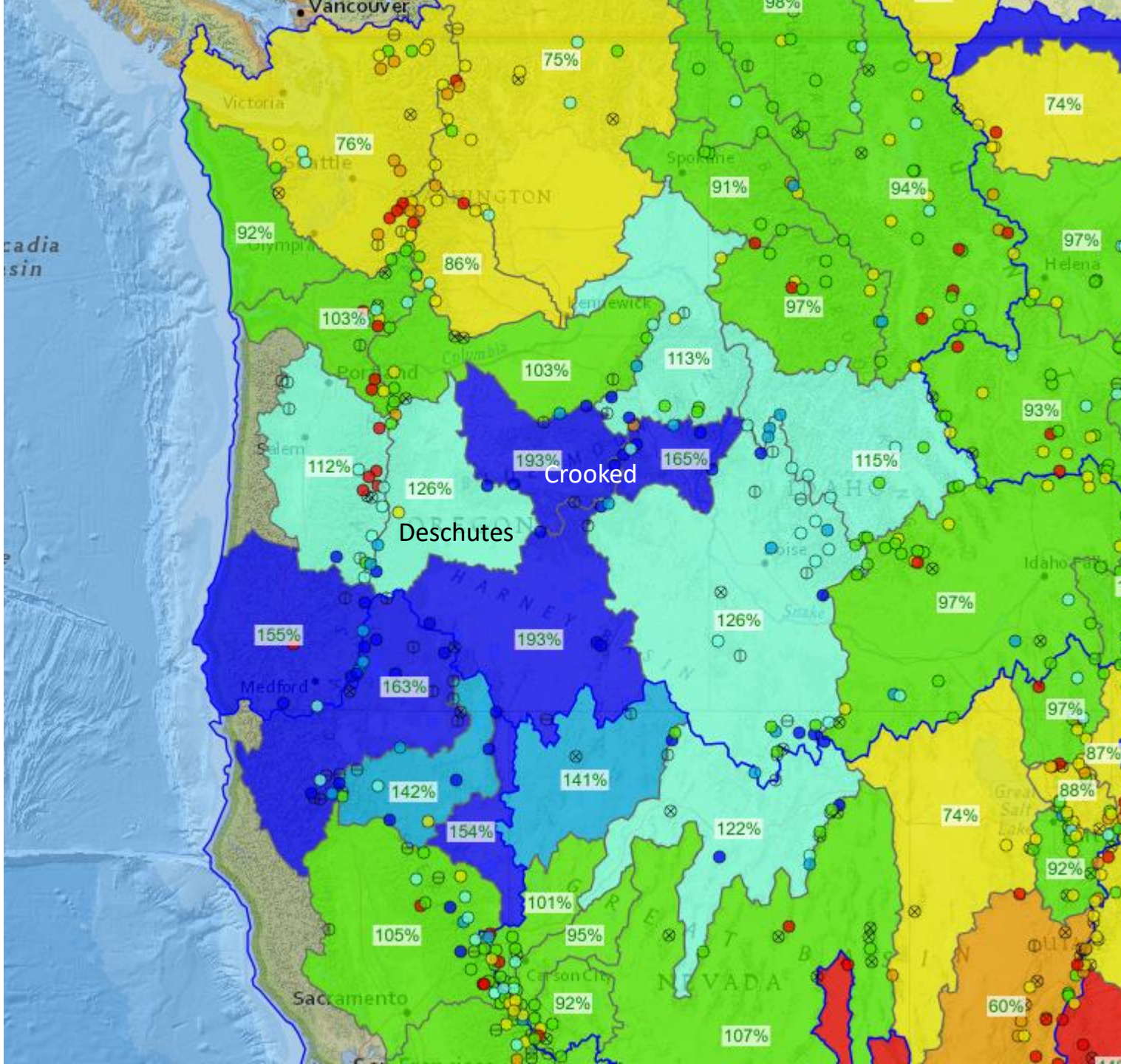
Prineville 97% Full

Ochoco 90% Full

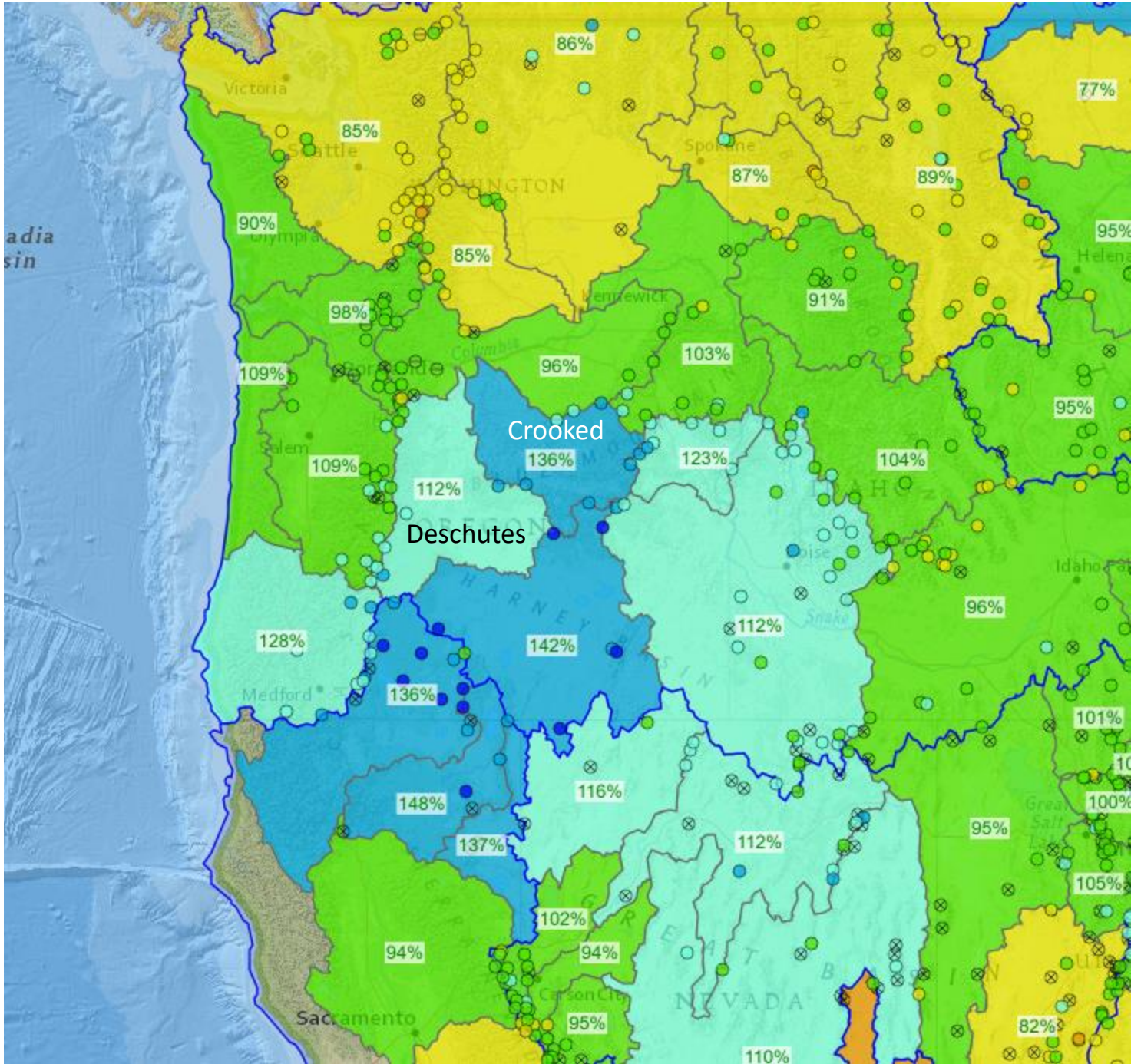


SNOWPACK in the PNW:

More spring runoff to come.



Water Year PRECIPITATION in the PNW:



DESCHUTES

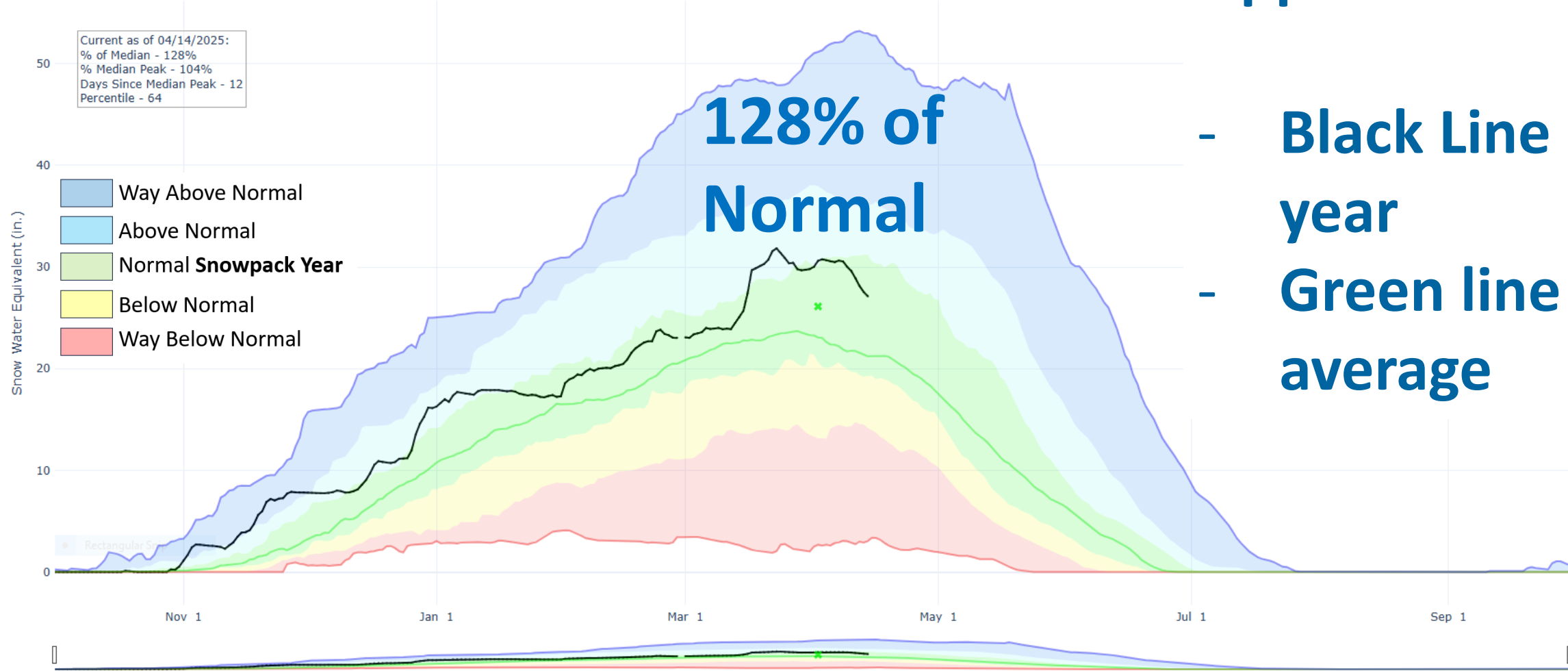
SNOWPACK in the Upper Deschutes

SNOW WATER EQUIVALENT IN UPPER DESCHUTES

Reset Range

Link to data: CSV / JSON

Current as of 04/14/2025:
% of Median - 128%
% Median Peak - 104%
Days Since Median Peak - 12
Percentile - 64

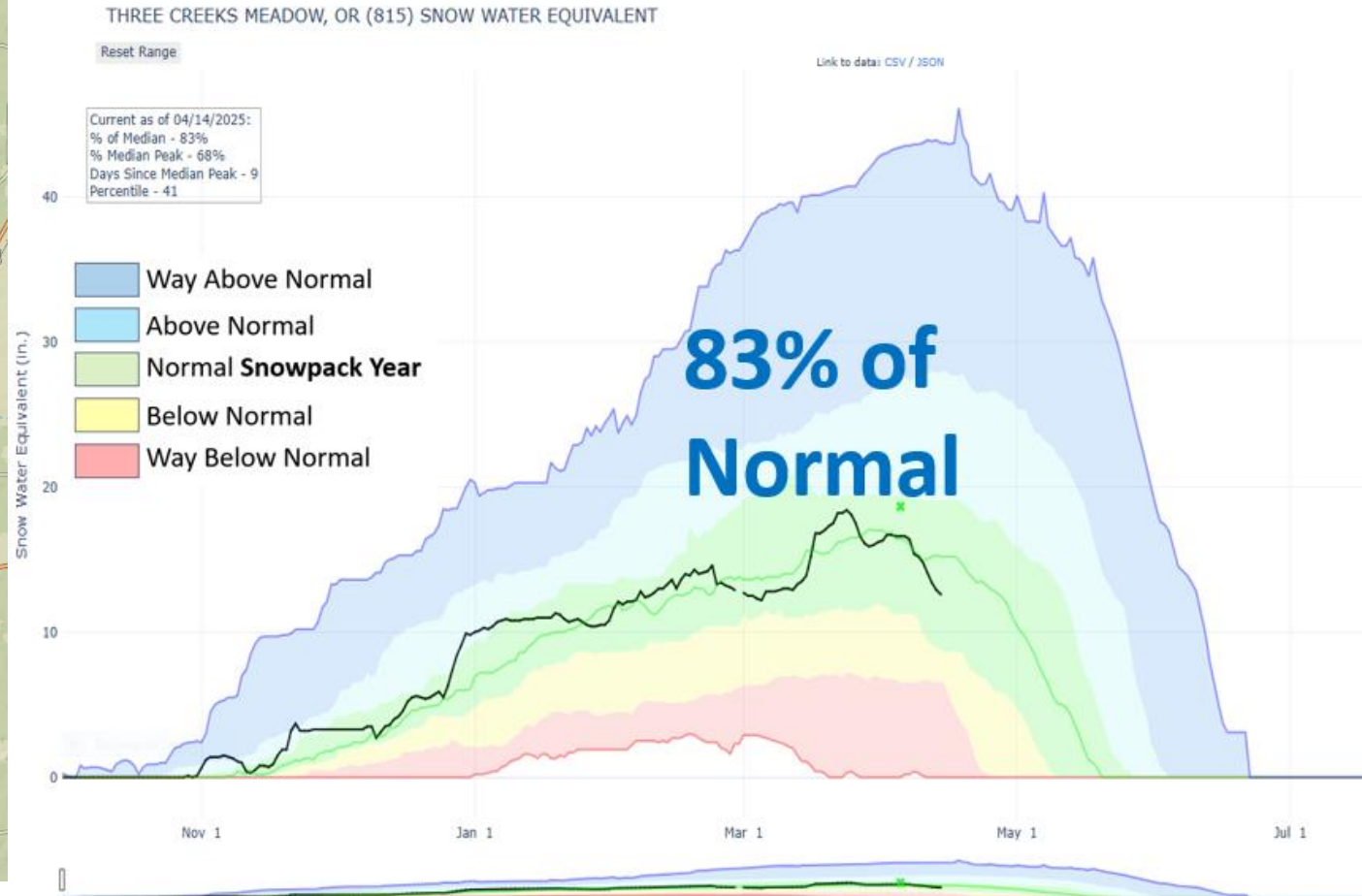
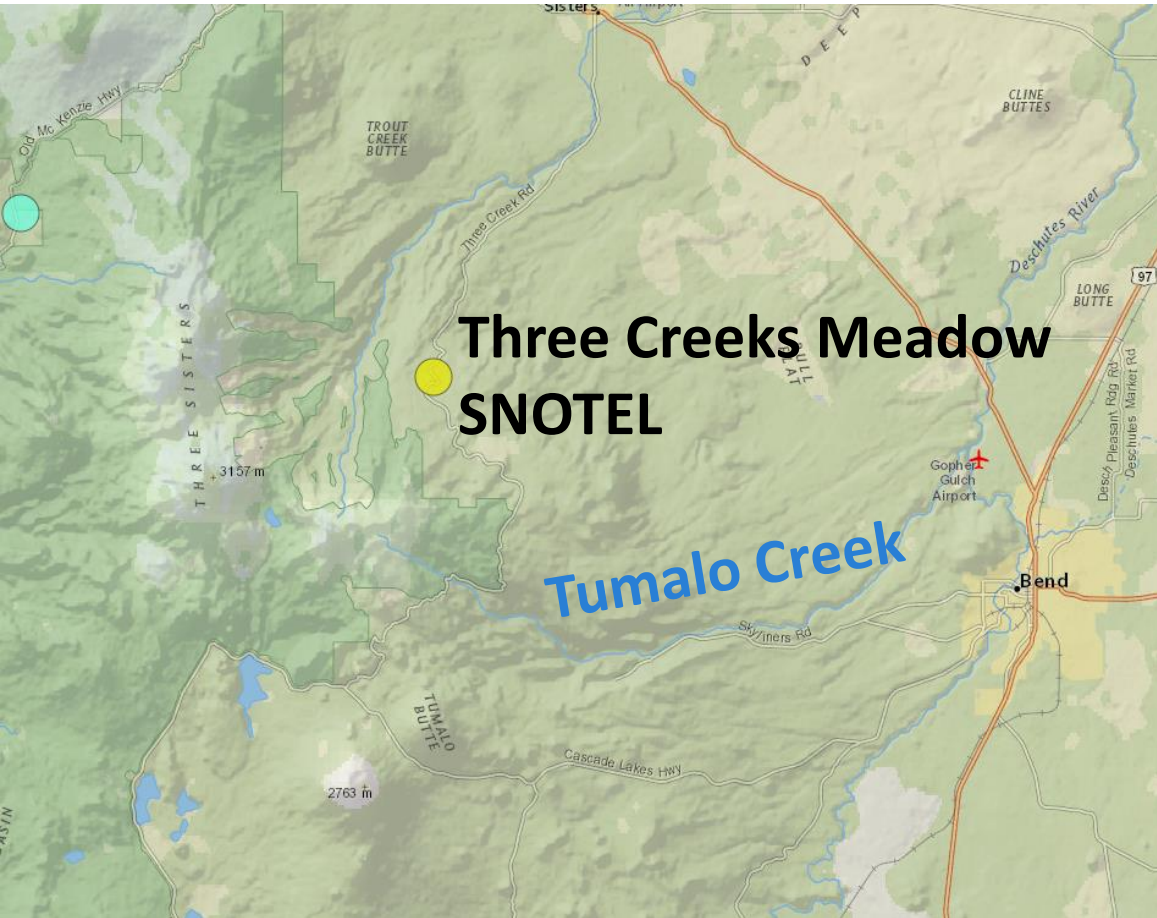


Statistical shading percentiles are calculated from period of record (POR) data, excluding the current water year. Percentile categories range from: minimum to 10th percentile, 10th - 30th, 30th - 70th, 70th - 90th, and 90th - maximum.

For more information visit: [30-Year Hydroclimatic Normals](#)

Updated: Monday, Apr 14, 2025 01 PM CST

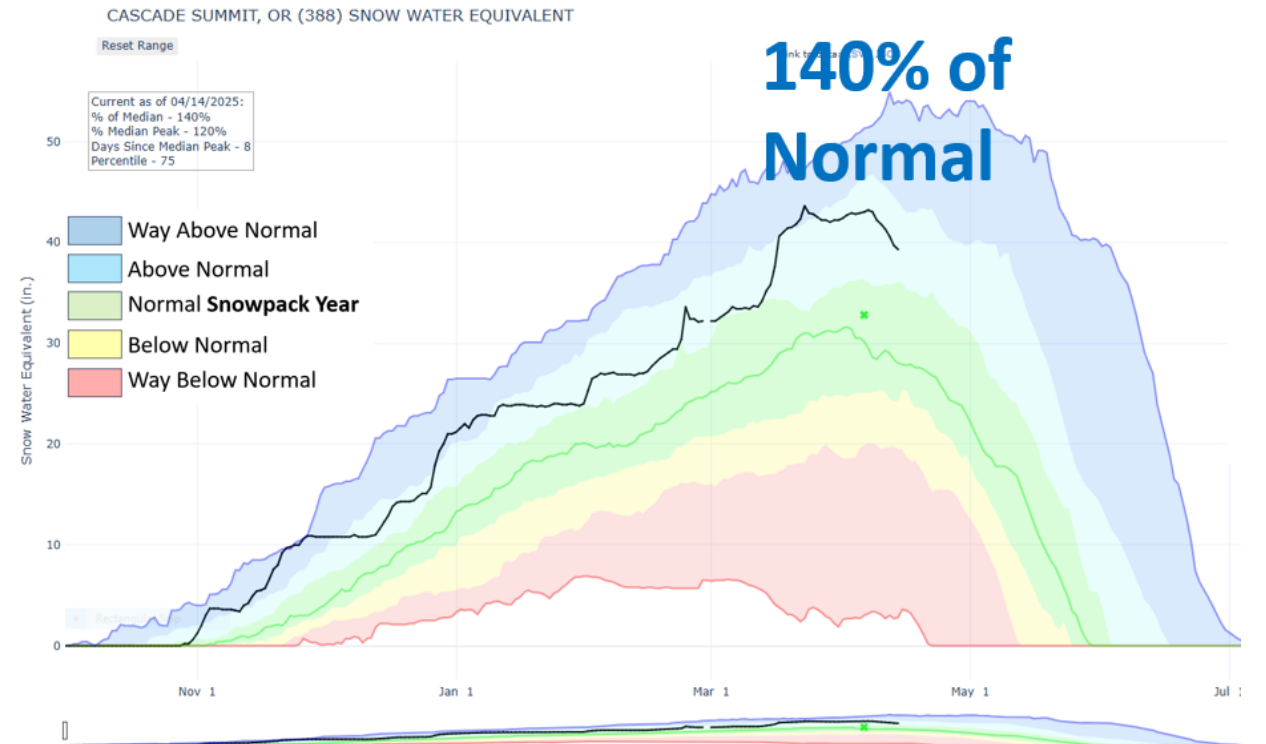
Mid-Elevation snowpack above Tumalo closer to a Normal Year



Mid-Elevation snowpack above Crescent Creek above Normal Year



Cascade Summit



PRECIPITATION ACCUMULATION IN UPPER DESCHUTES

Reset Range

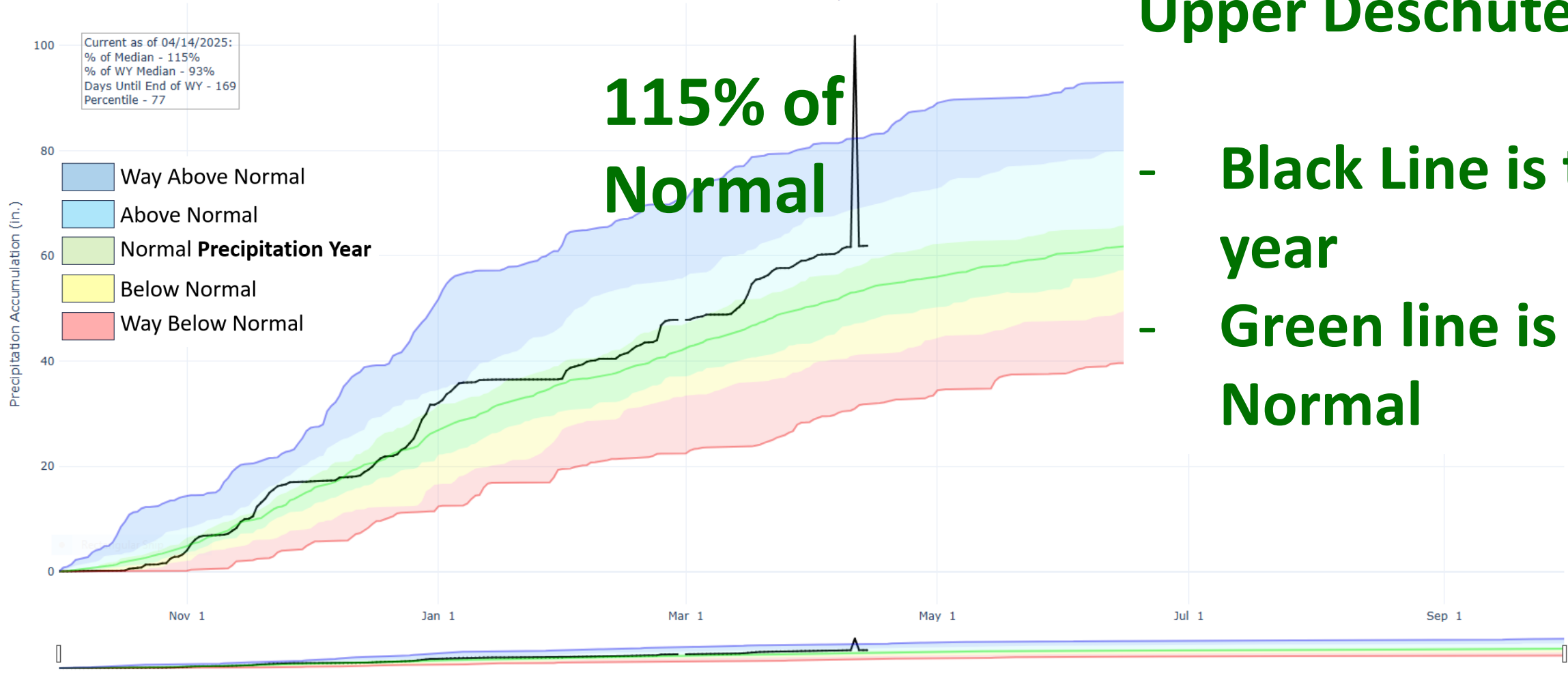
Link to data: CSV / JSON

Current as of 04/14/2025:
% of Median - 115%
% of WY Median - 93%
Days Until End of WY - 169
Percentile - 77

115% of Normal

PRECIPITATION in the Upper Deschutes

- Black Line is this year
- Green line is Normal



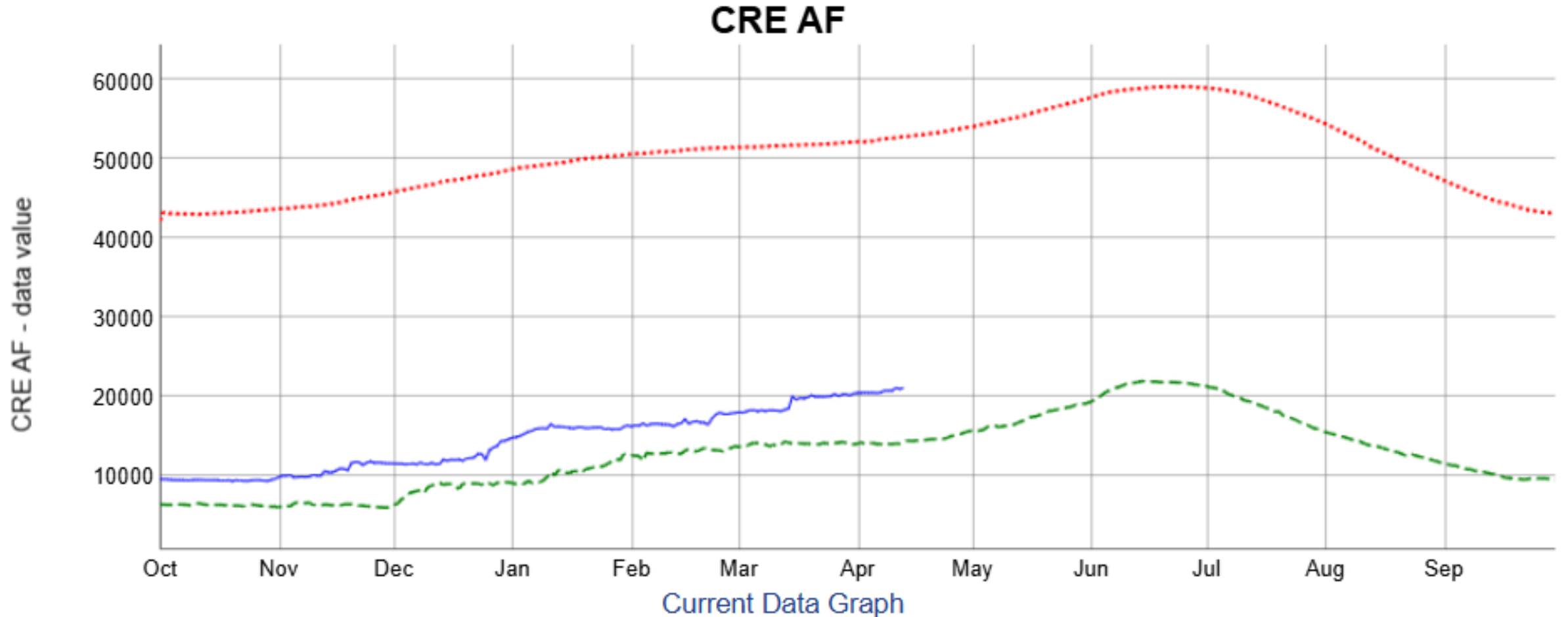
Statistical shading percentiles are calculated from period of record (POR) data, excluding the current water year. Percentile categories range from: minimum to 10th percentile, 10th - 30th, 30th - 70th, 70th - 90th, and 90th - maximum.

For more information visit: [30-Year Hydroclimatic Normals](#)

Updated: Monday, Apr 14, 2025 01 PM CST

Crescent Lake Contents as of this Week

- Current Year
- - Previous Year
- ... Average

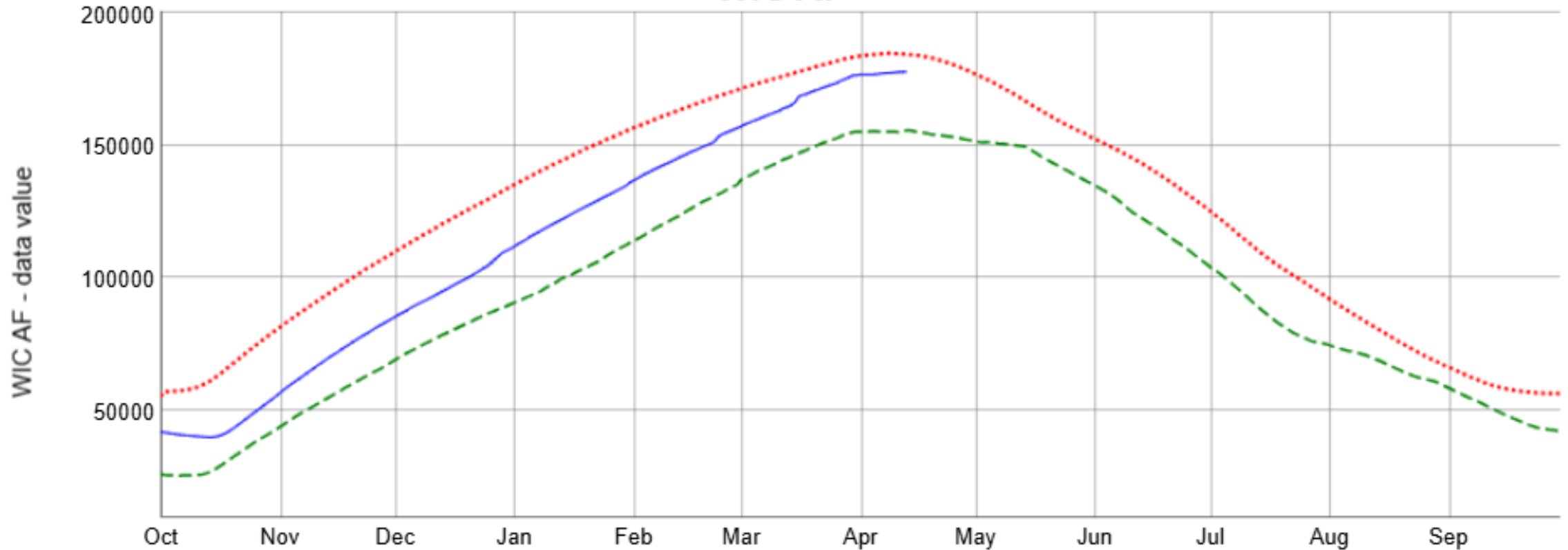


PROVISIONAL DATA - Subject to change

Wickiup Res Contents as of this Week

- Current Year
- - Previous Year
- ... Average

WIC AF

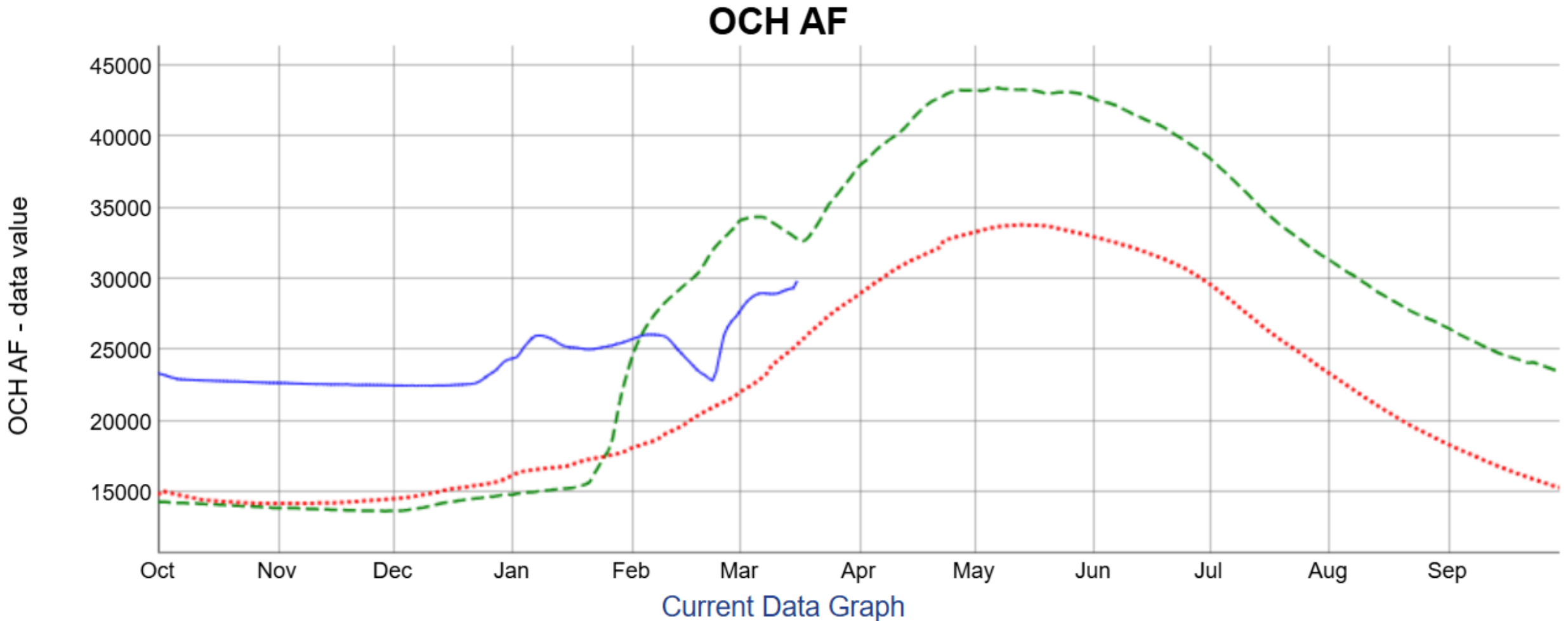


Current Data Graph

PROVISIONAL DATA - Subject to change

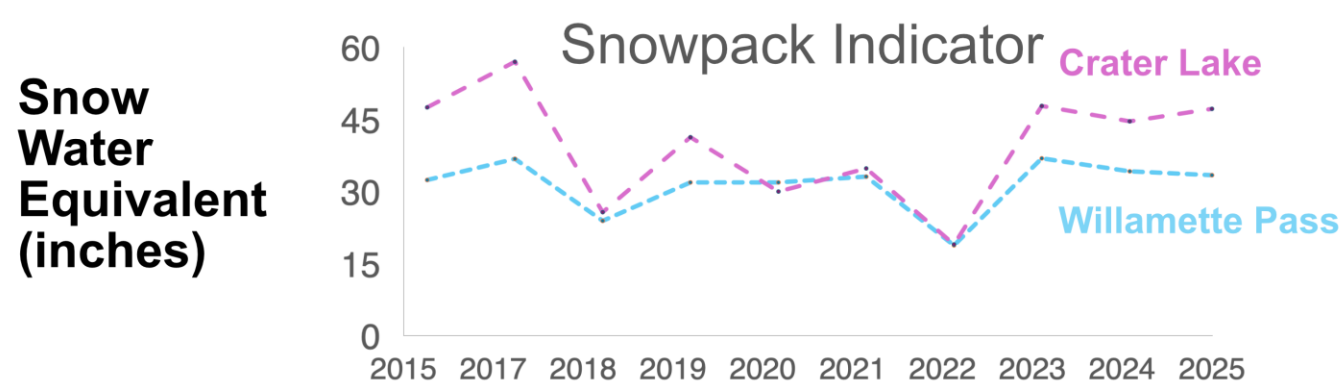
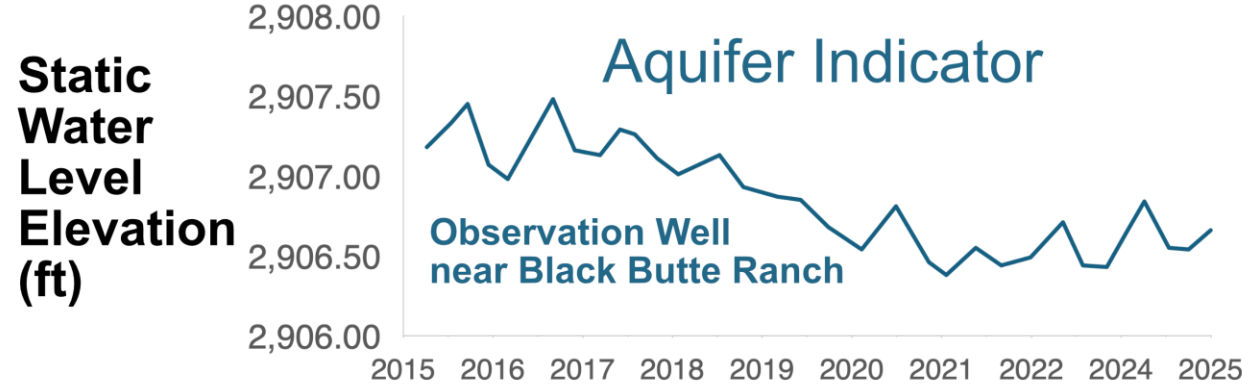
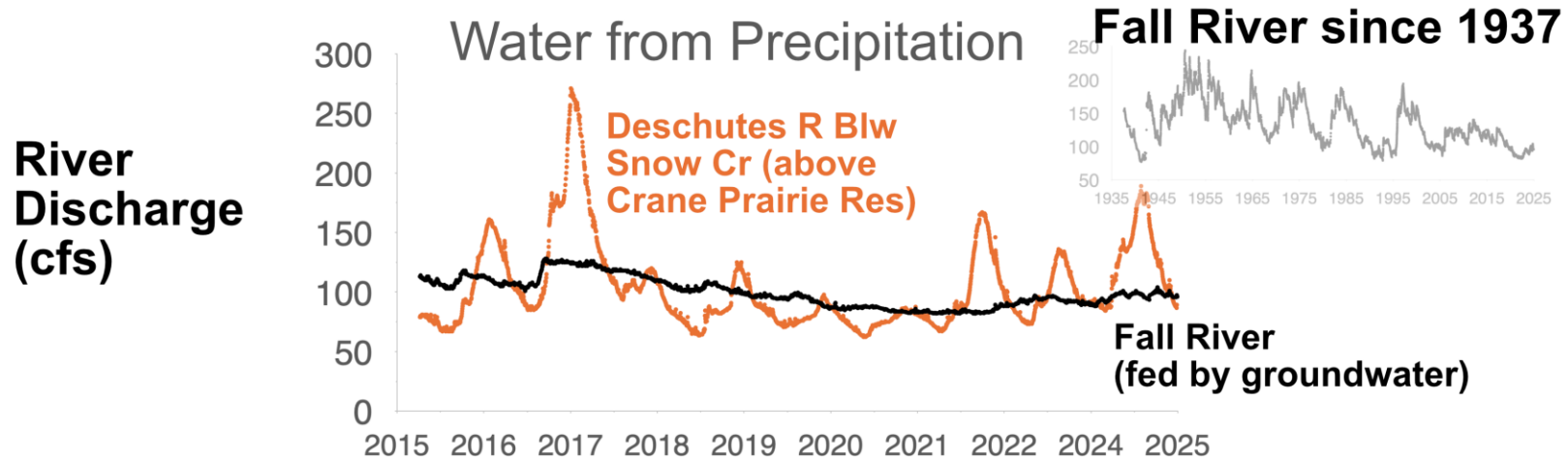
Ochoco Res Contents as of this Week

- Current Year
- - Previous Year
- ... Average



PROVISIONAL DATA - Subject to change

Water in the Upper Deschutes over the last 10 years



No Drought!

Map released: Thurs. April 10, 2025

Data valid: April 8, 2025 at 8 a.m. EDT

Intensity

- None
- D0 (Abnormally Dry)
- D1 (Moderate Drought)
- D2 (Severe Drought)
- D3 (Extreme Drought)
- D4 (Exceptional Drought)
- No Data

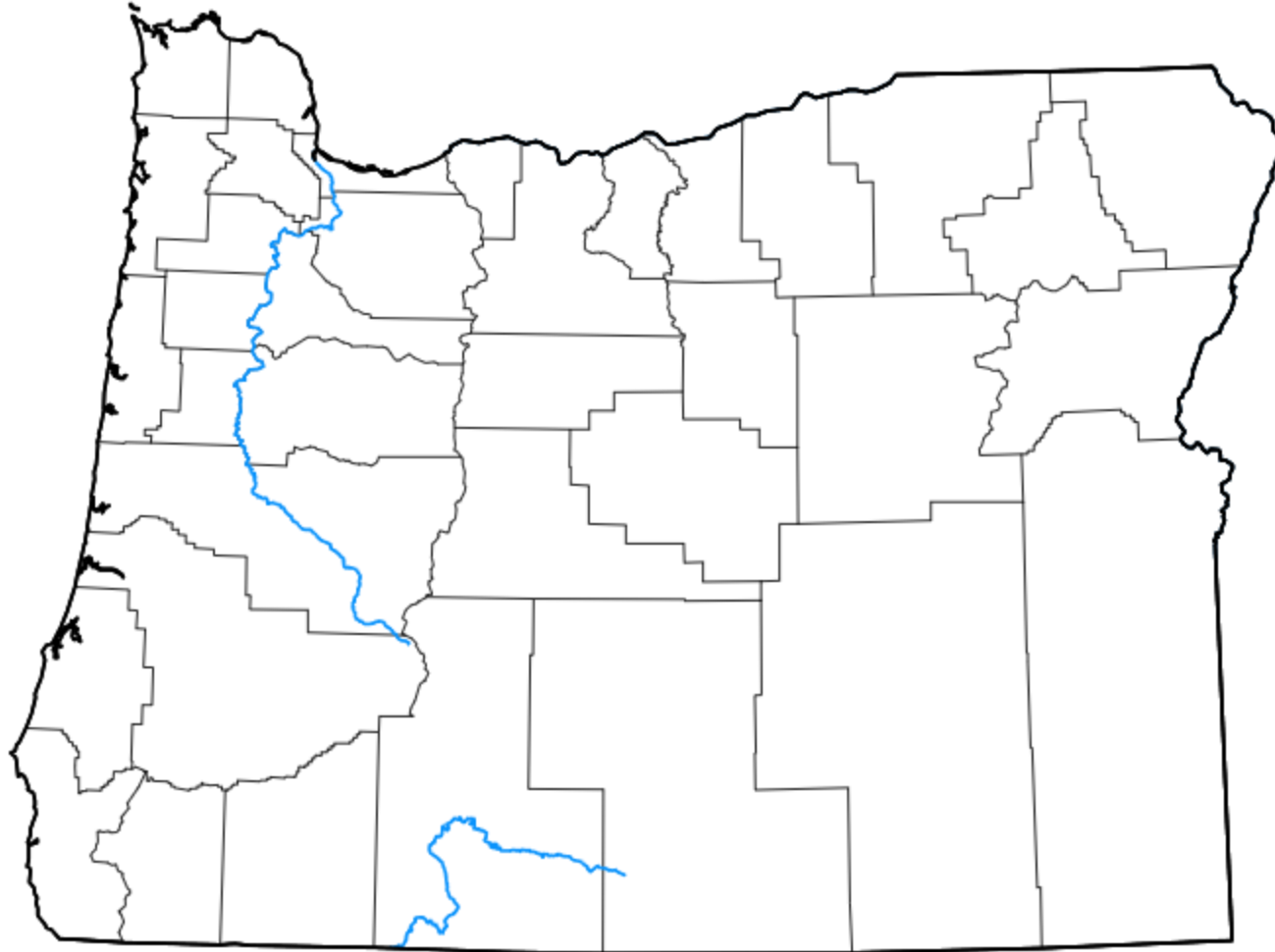
Authors

United States and Puerto Rico Author(s):

[David Simeral](#), Western Regional Climate Center

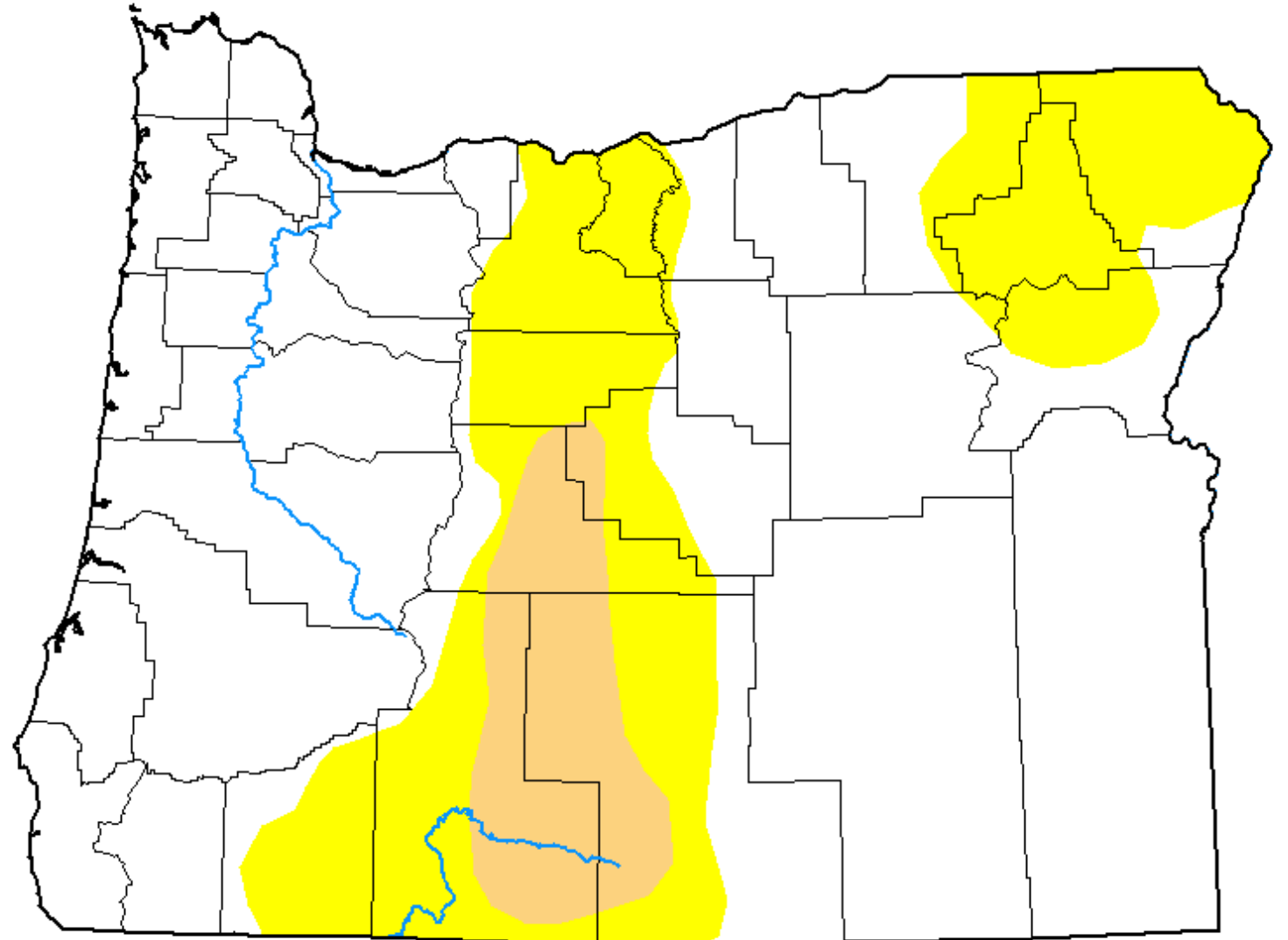
Pacific Islands and Virgin Islands Author(s):

[Anthony Artusa](#), NOAA/NWS/NCEP/CPC



April 9, 2024

This Time Last Year....



Questions?

- www.oregon.gov/owrd
- www.or.nrcs.usda.gov/snow/data/current.html (*SNOTEL*)
- www.usbr.gov/pn/hydromet/destea.html

jeremy.t.giffin@water.oregon.gov
(541) 306-6885

Aubrey Perry (Watermaster 1933-1960) and Jack Frost (NRCS) measuring snowpack in Dutchman Flat area Circa 1940-1945.